

Digitrax Device Firmware Update Instructions

The following instructions are provided for upgrading any Digitrax upgradeable (IPL) hardware to the latest Firmware Revision. Digitrax Firmware updates are released to offer expanded features or address specific issues with products. If you are not experiencing any specific issues or in need of the new features offered by the Firmware Revision, it is recommended that you do not upgrade your device. It is also recommended that you contact Digitrax Tech Support if you are experiencing issues with your Digitrax products or are unfamiliar with the Firmware update process.

These instructions assume that a Digitrax PR3 or DCS240 has been properly installed and functioning correctly. When using a PR3 a Digitrax Command Station will also be required. Digitrax does not support the use of other LocoNet to Computer interfaces for Firmware updates. It is also assumed that the latest DigiIPL Utility is being used and any required *.DMF files have been downloaded from <http://www.digitrax.com> prior to this Firmware update. It is recommended that you periodically check to insure you are using the latest DigiIPL utility. The DigiIPL utility is included as part of the SoundLoader installation package. Digitrax does not support the use of other 3rd party applications for IPL updates.

These instructions must be followed step by step to ensure the device is updated correctly.

Multiple devices can be upgraded at the same time. A LocoNet compatible splitter can be used to provide additional LocoNet jacks.

When updating any device with the DigiIPL Utility, nothing should be plugged in or unplugged from Loco Net while the update is running.

The following steps need to be taken before the Firmware Update can be started:

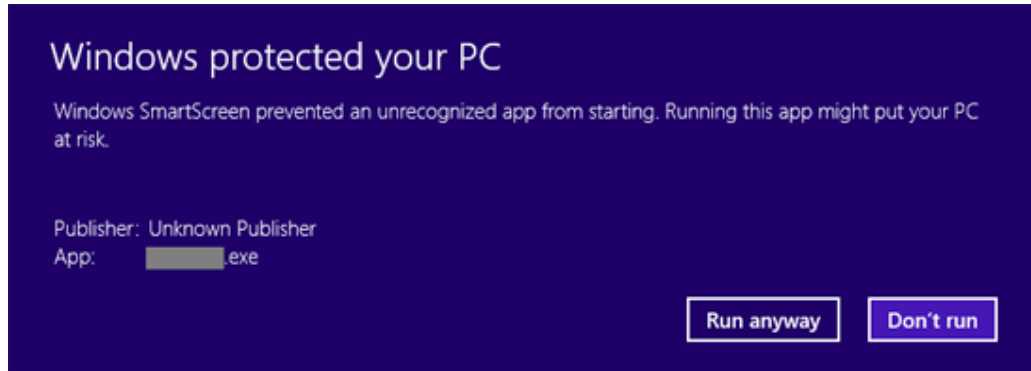
1. Disconnect **ALL** LocoNet devices from either the DCS240 or PR3/Command Station combination you will be using. No other LocoNet devices should be connected in at this time. A quiet LocoNet is essential for successful completion of the update
2. If updating a device that requires an external power supply, ensure that the power supply is plugged in and powering the device. If updating a Throttle or other powered device, insert a known **GOOD** battery into the

device which is to be updated.

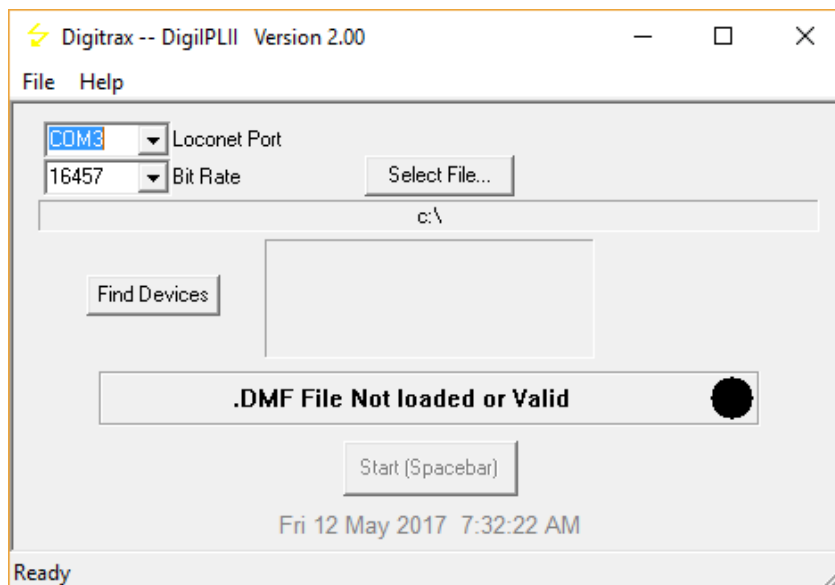
3. Plug the device into Loconet.

To begin the Firmware Update, double click on the DigiIPLXXX.exe icon.

If the following Open File – Security Warning box is displayed, click ‘Run anyway ‘.

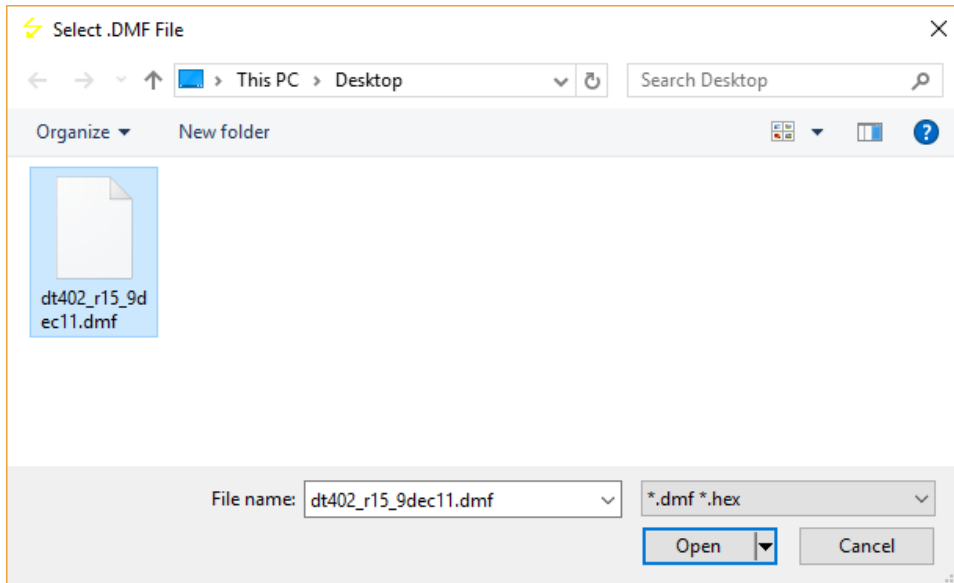


The DigiIPL Utility should open and look similar to this:

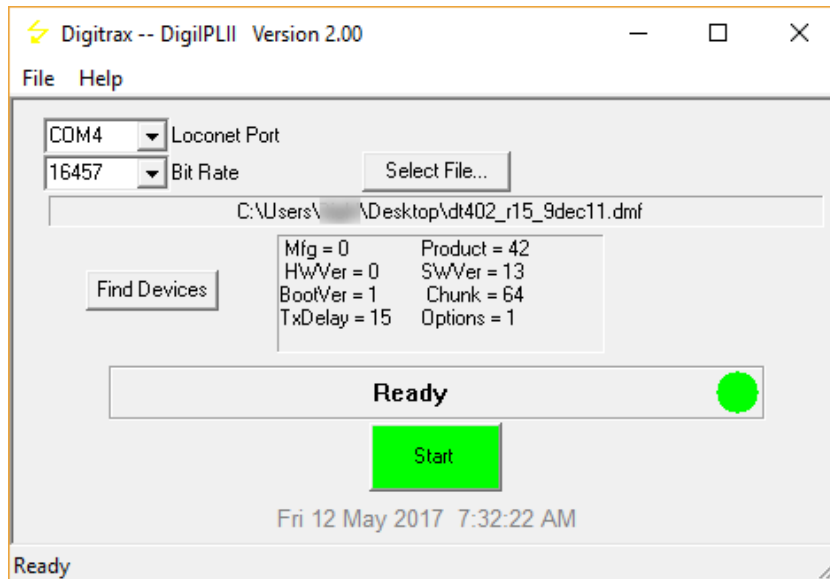


Verify that the proper Loconet Port is selected. This is the Com Port that the computer has assigned to the PR3 or DCS240. The Bit Rate should be set for 16457.

Click on the ‘Select File...’ box, navigate to the location where you saved the **DMF file** for the device being updated, click on the filename to highlight it then click ‘Open’.

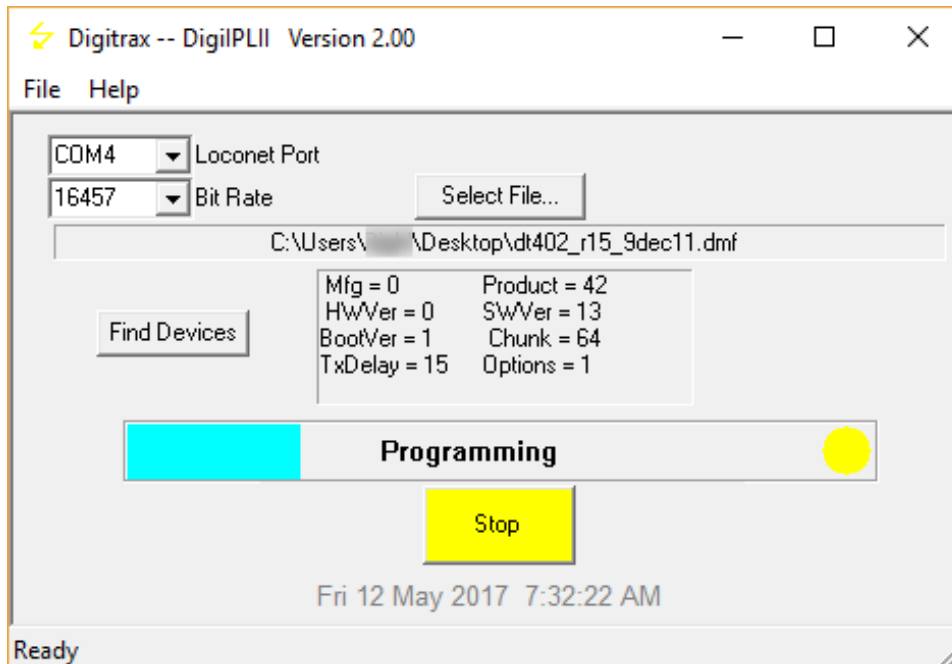


The program will go back to the main screen and look similar to this:



Click on the ‘Start’ button

A progress bar will be displayed and will look similar to this:



While the device is being updated, various LEDs on the device will blink. If updating a Throttle, the white Flashlight LED will blink and the Throttle Display will display 'IPL Run'. Refer to your specific device manual for product specific indication. **Note:** If the IPL process does not complete please repeat the steps above. Occasionally an IPL process will take multiple attempts to successfully complete.

When the update completes, unplug the device from LocoNet.

Remove power from the device and then reapply power. If updating a Throttle, remove the battery from the Throttle and then reinsert the battery.

Plug the device back into LocoNet.

Reconnect all the LocoNet devices that were previously disconnected. Close out any DigiIPL display boxes that are still opened. Return the layout to normal operation.

Please contact the Helpdesk (helpdesk.digitrax.com) with any questions.

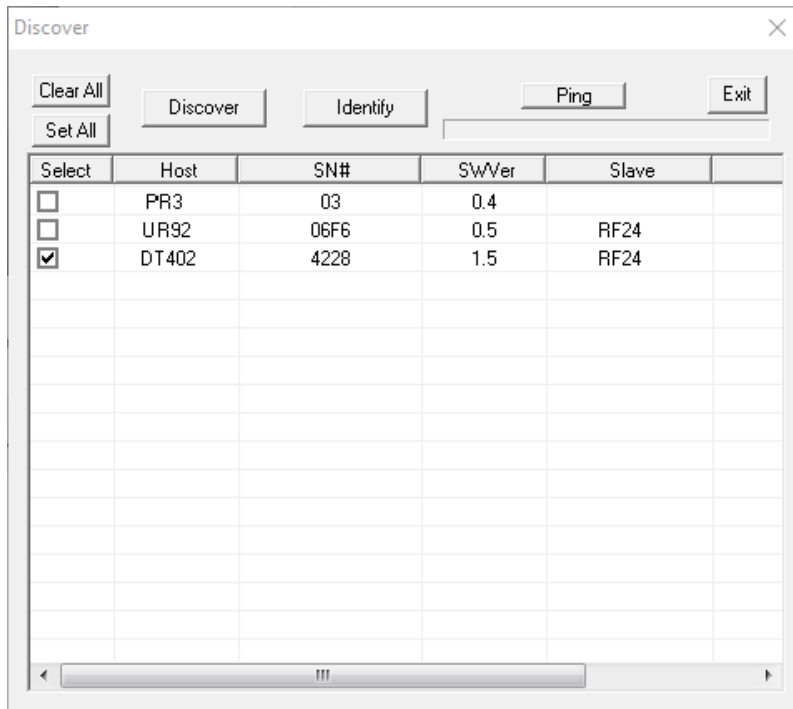
Tech Support is not configured to diagnose issues related to computer, operating system, hardware, configuration or other possible problem areas that may cause problems with running the DigiIPL utility

Additional Information

The DigiIPL utility can be used to display the version of firmware that is in a particular device.

To see the firmware version, click the 'Find Devices' box. A list of devices will appear in the Discover box.

The display will look similar to this:



The screenshot shows a window titled "Discover" with a close button (X) in the top right corner. Below the title bar are several buttons: "Clear All", "Set All", "Discover", "Identify", "Ping", and "Exit". Below these buttons is a table with the following columns: "Select", "Host", "SN#", "SwVer", and "Slave". The table contains three rows of data:

Select	Host	SN#	SwVer	Slave
<input type="checkbox"/>	PR3	03	0.4	
<input type="checkbox"/>	UR92	06F6	0.5	RF24
<input checked="" type="checkbox"/>	DT402	4228	1.5	RF24

In this example, the PR3 has version 4, UR92 has version 5 and the DT402 has version 1.5 loaded.