

Windows 10 Installation Instructions for the PR3

NOTE: If Windows 10 installed the drivers for the PR3, these instructions are not needed. These instructions are only to be used if Windows 10 did not automatically install the drivers.

Required equipment:

- PR3 or PR3 Xtra
- Downloaded and extracted PR3 files from www.digitrax.com/downloads (PR3 Windows XP, Vista, 7, 8, and 10 Drivers) or Installation CD which was included with the original PR3
- USB Cable
- PS14 (or equivalent) 14-volt power supply

STOP!

Read these instructions before connecting the PR3 to your Computer

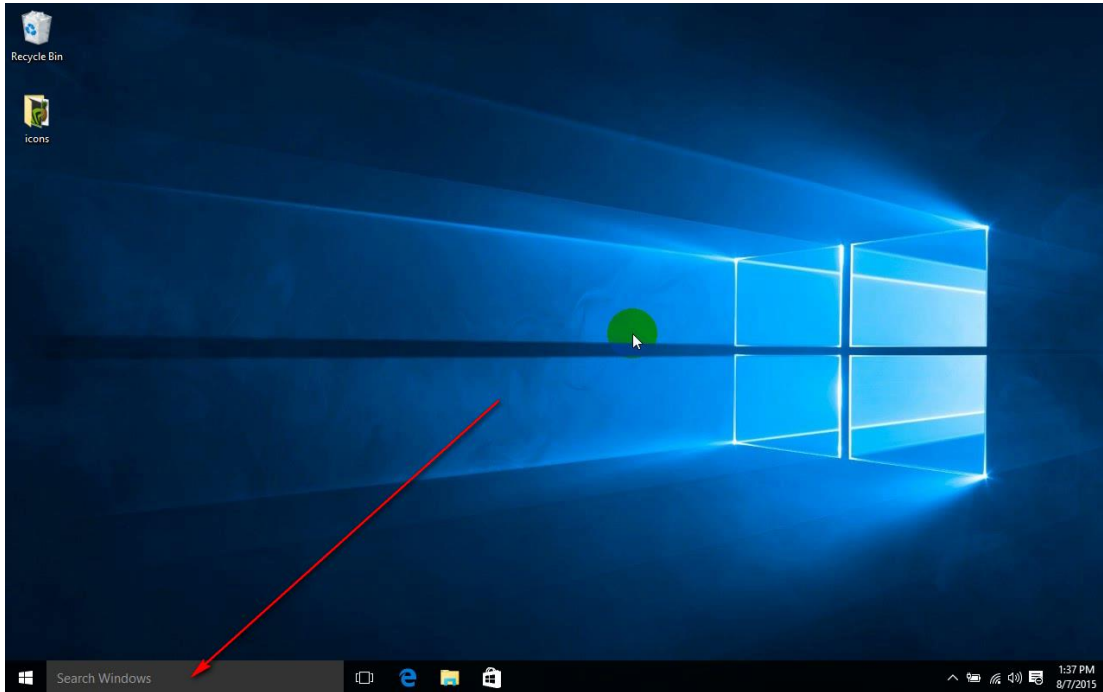
- NOTE - The Windows Vista drivers are compatible with Windows 10.
- These instructions are for a new installation of the PR3 Drivers.

Microsoft made many changes to Windows 10 and how it handles serial devices. You should be able to plug the PR3 into a USB Port and Windows 10 will automatically install the required drivers. Once installation of the drivers is complete, go to Device Manager to verify the PR3 is installed properly and make note of the assigned COM Port.

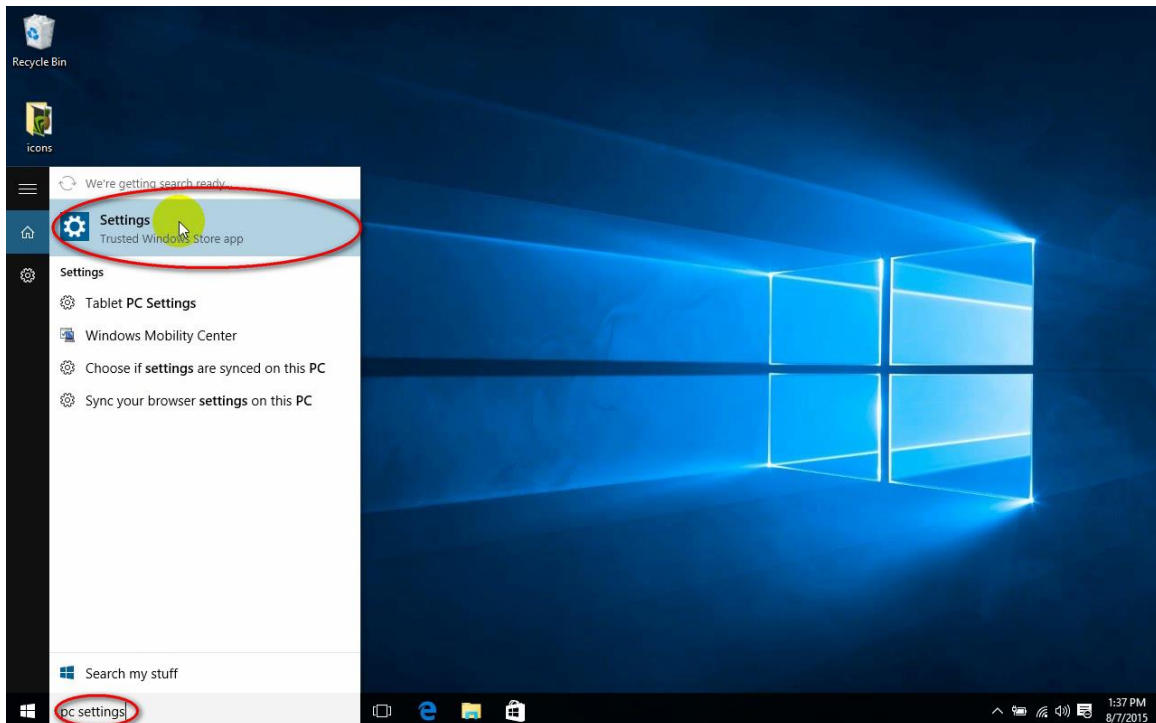
PART ONE

Changes to Windows 10 need to be made before you can proceed! Please do the following:

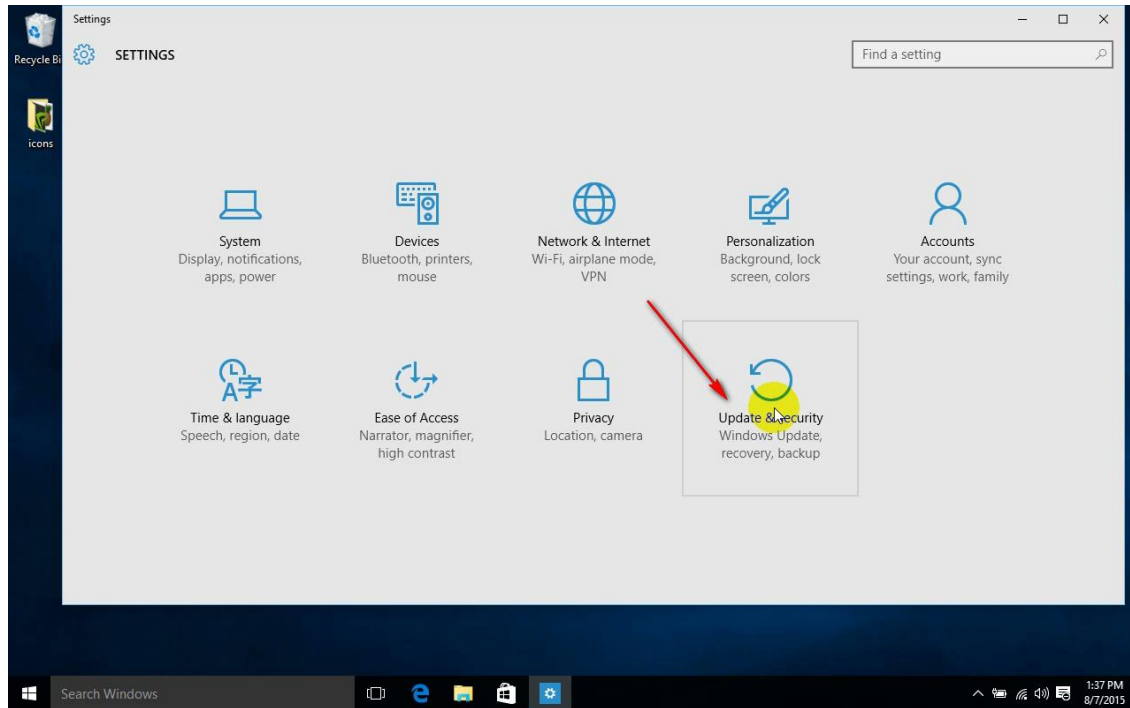
1. Click into the “Search Windows” box



2. Type in “settings”, the “Settings” option should show up above. Click on the “Settings” option.

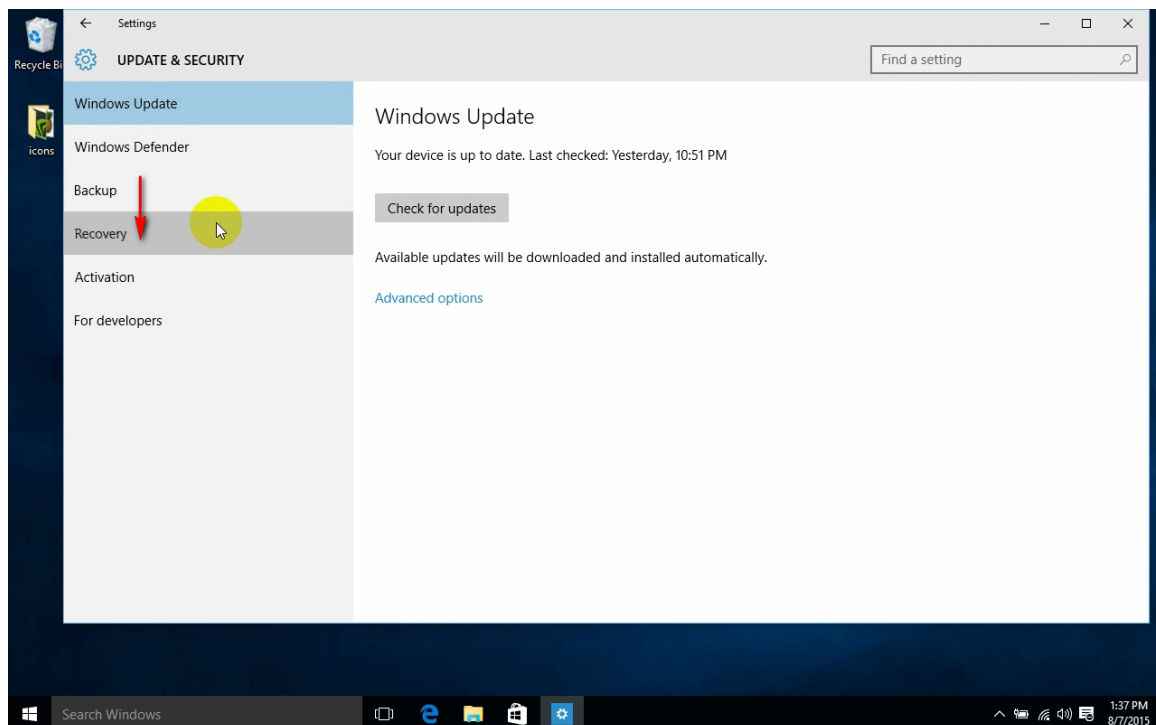


3. The Settings options will show up. Click on “Update & Security”

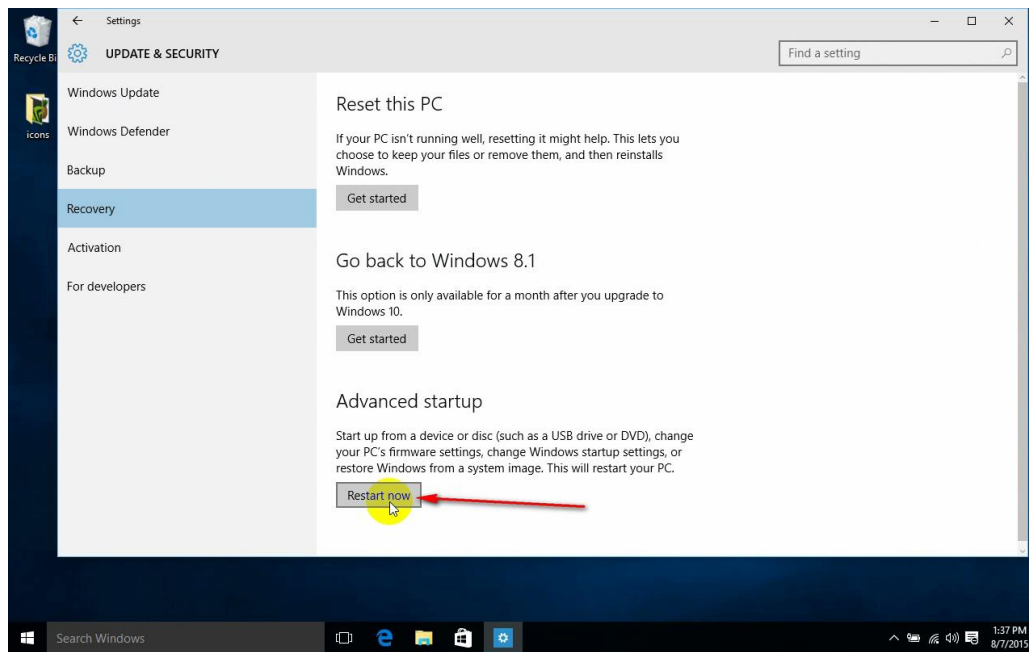


4. Update & Security will appear.

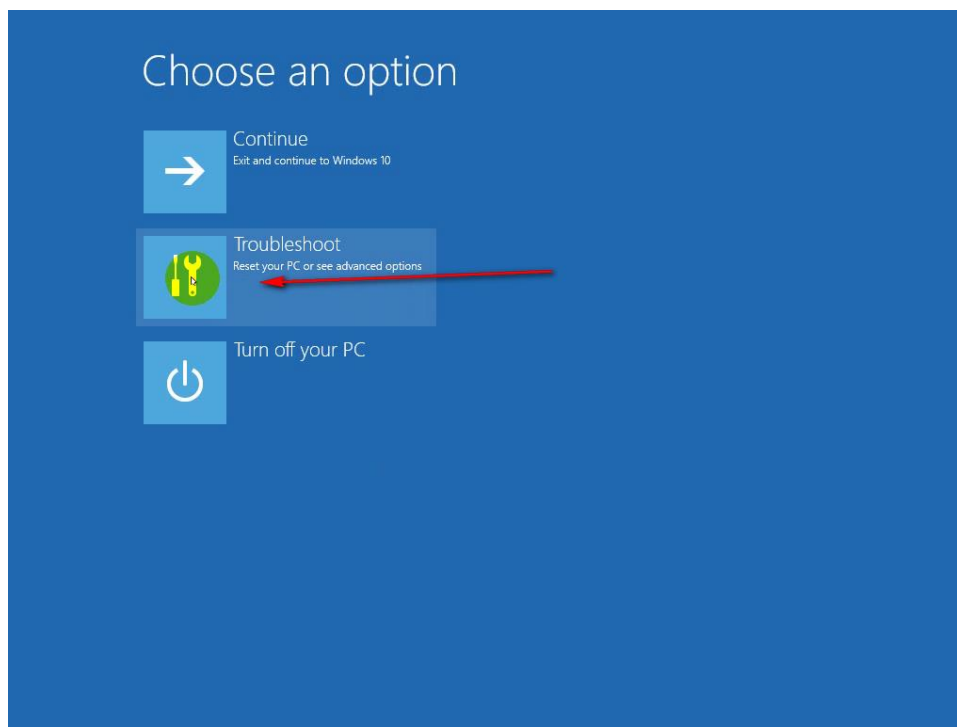
5. Click on “Recovery”



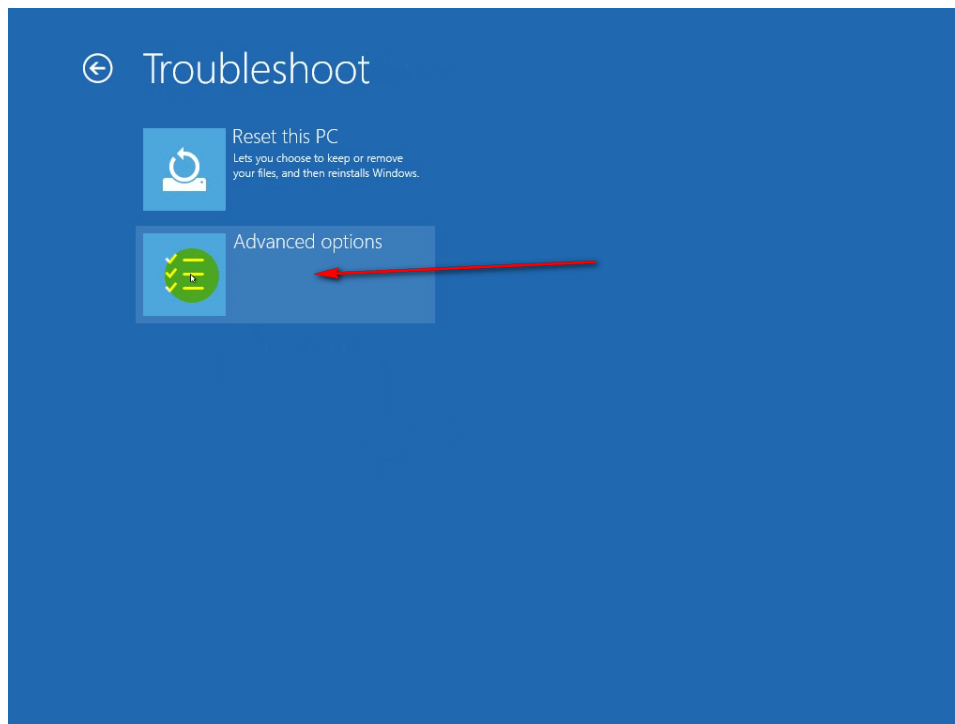
6. Click on “Restart Now” under “Advanced startup”



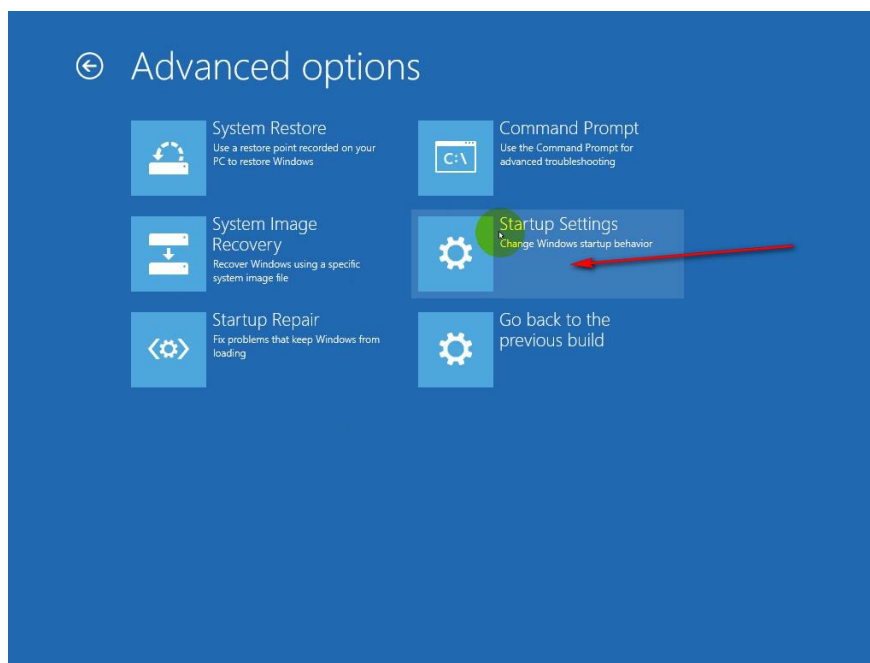
7. Windows will now restart into a new options menu, select “Troubleshoot”.



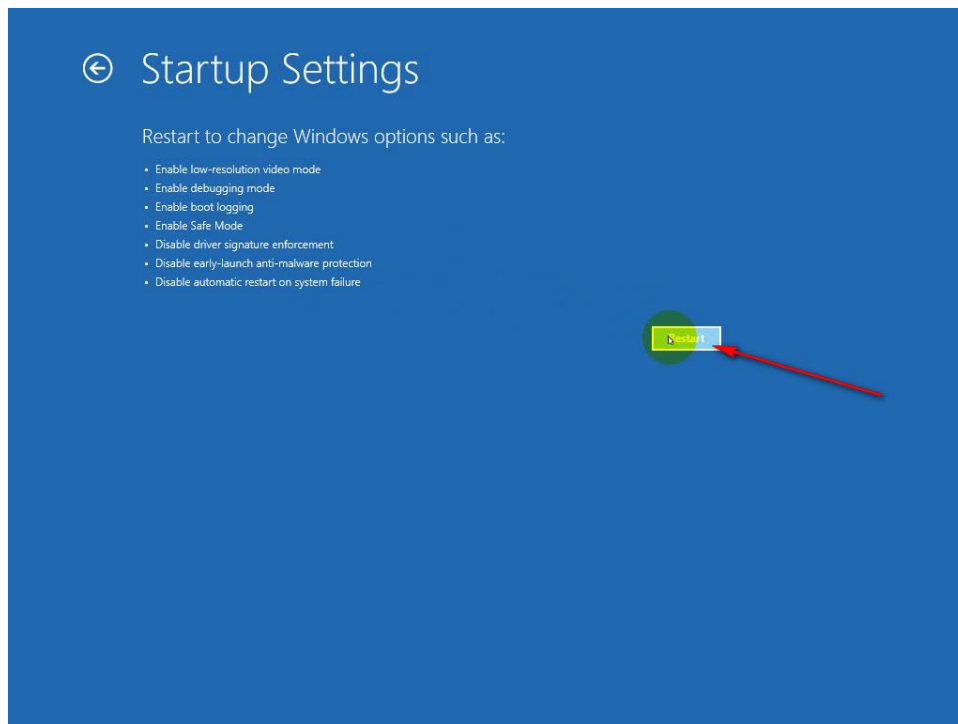
8. In the Troubleshoot menu, click on “Advanced options”



9. In the “Advanced Options” menu click on “Startup Settings”



10. You will now want to click on “Restart” to boot into the Startup Settings boot screen.



11. Once your computer has rebooted, the “Startup Settings” screen appears, Press “7” or F7” on your keyboard to “Disable driver signature enforcement”. Your computer will reboot and you will now be able to install the PR3 Driver.

Startup Settings

Press a number to choose from the options below:

Use number keys or functions keys F1-F9.

- 1) Enable debugging
- 2) Enable boot logging
- 3) Enable low-resolution video
- 4) Enable Safe Mode
- 5) Enable Safe Mode with Networking
- 6) Enable Safe Mode with Command Prompt
- 7) Disable driver signature enforcement
- 8) Disable early launch anti-malware protection
- 9) Disable automatic restart after failure

Press F10 for more options
Press Enter to return to your operating system

Once your computer has rebooted, the "Startup Settings" screen appears.

Press "7" or "F7" on your keyboard to Disable driver signature enforcement.

Your computer will reboot and you will now be able to install the PR3 driver.

PART TWO

If you downloaded the drivers from the Digitrax website, extract the zipped files and note where you stored them prior to beginning installation:

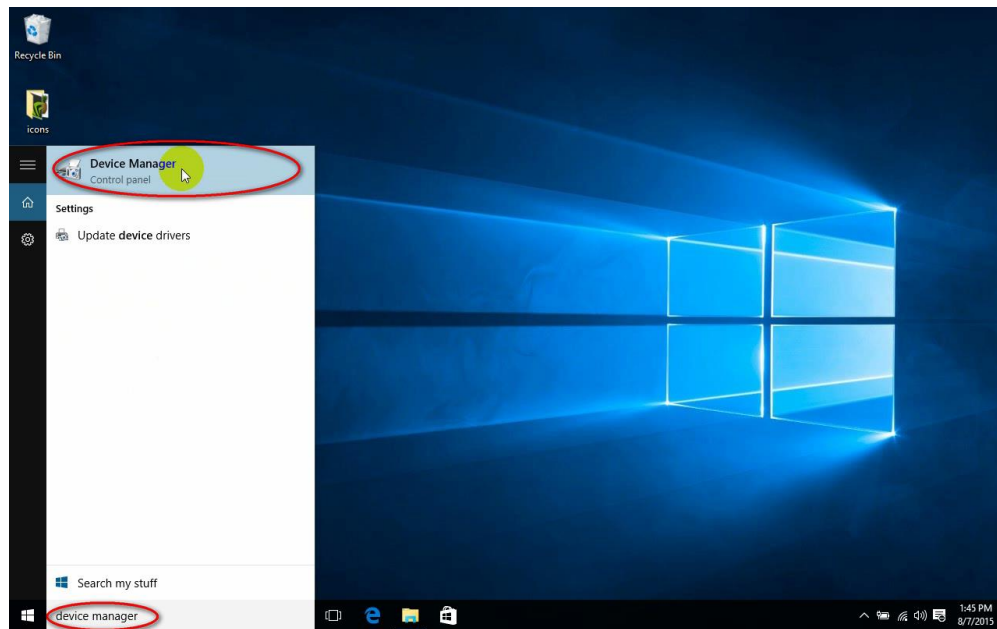
1. Right click on the file folder.
2. Then click on ***Extract All...***
3. Select a location, such as the desktop, where you will save the extracted files.
4. Click on Extract.
5. The files will decompress into a new folder.
6. Note the location where you saved the extracted files. You'll need it later in the install process.

Installation

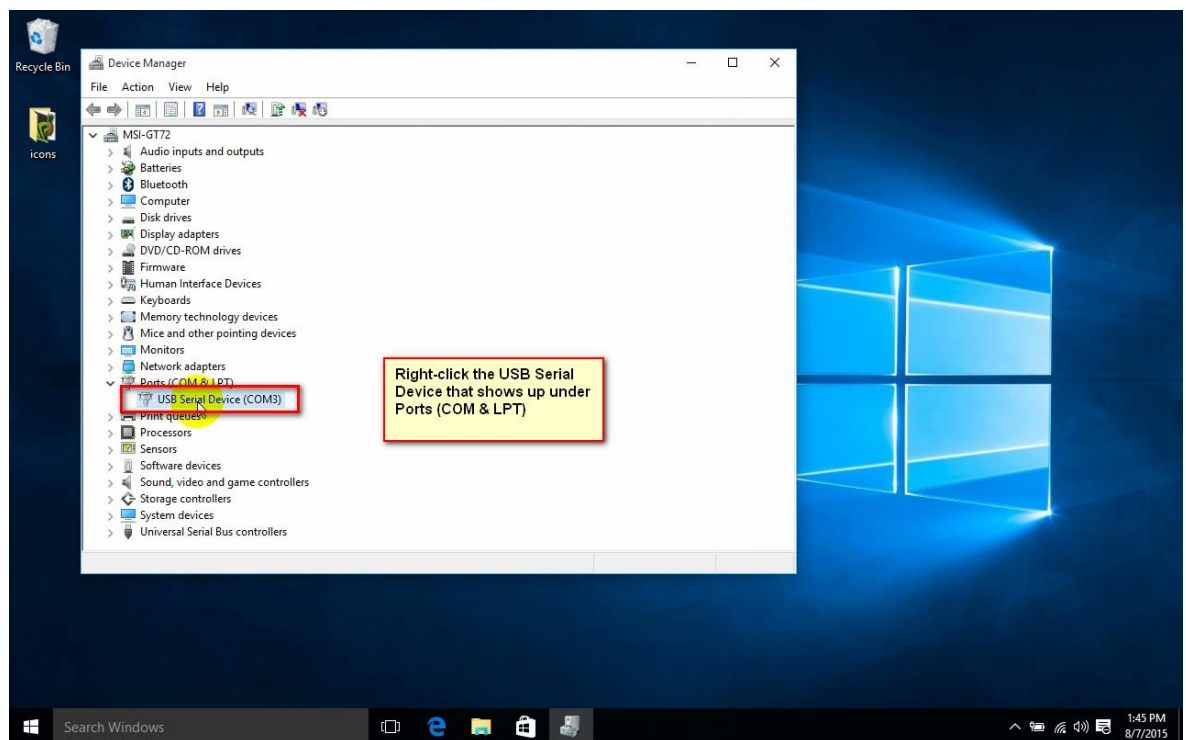
7. Plug PS14 into a wall outlet.
8. Plug the 2.1mm jack of the PS14 into the PR3's Power Connector located on the back of the PR3.
 - a. The red LED (next to "ERR") should light solid and
 - b. The Green LED (next to "USB") should blink on and off.
9. Press and Hold both buttons until the bi-color "STAT" LED flashes red and green. Release both buttons, the PR3 is now reset to its default settings (MS-100 Mode, No Termination).
10. Plug the USB cable into an open USB port on the computer. Select a port that is convenient and can be dedicated to the PR3. Using the same USB port will allow the PR3 to use the same Virtual Com Port number and ease future software configuration.
11. Plug the other end of the USB cable into the USB plug on the PR3.
12. A message saying that the driver has successfully installed will show.
13. If using the supplied CD-ROM Device Driver disk, insert the disk now.

NOTE - The following steps and screen captures may vary depending on your computer, software version and settings.

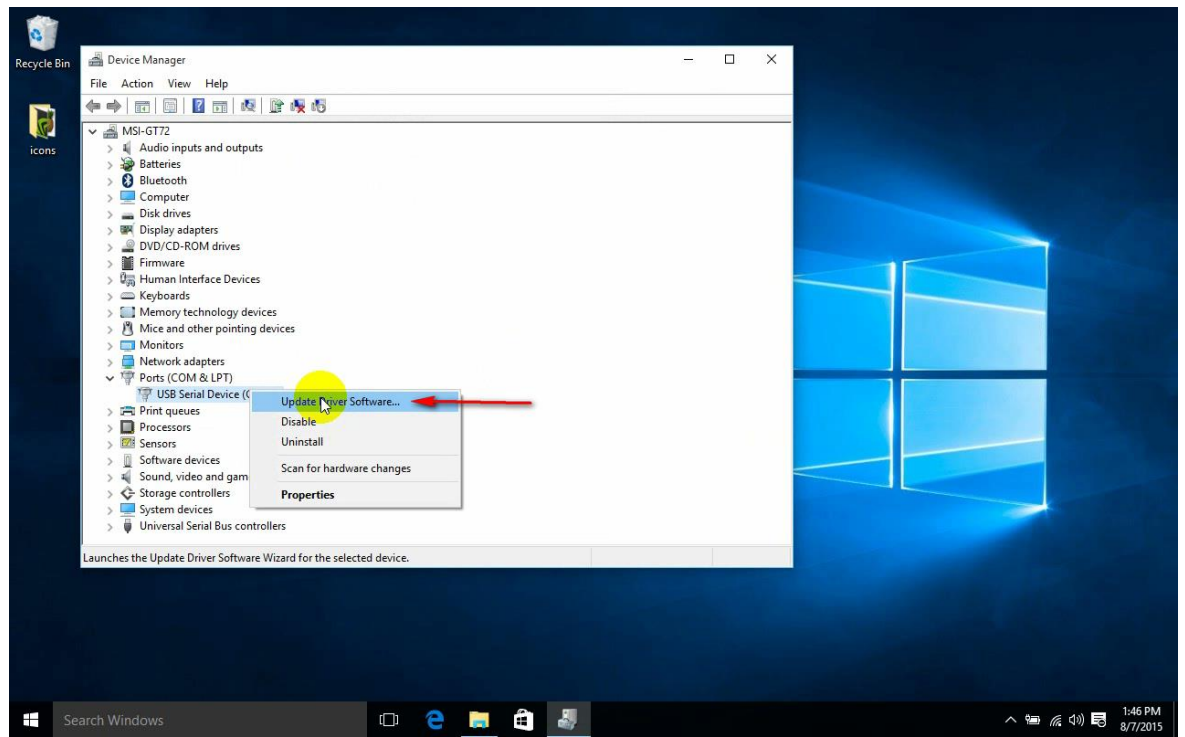
14. Click in the "Search Windows" Box, type in "device manager" and then click on the "Device Manager" option above.



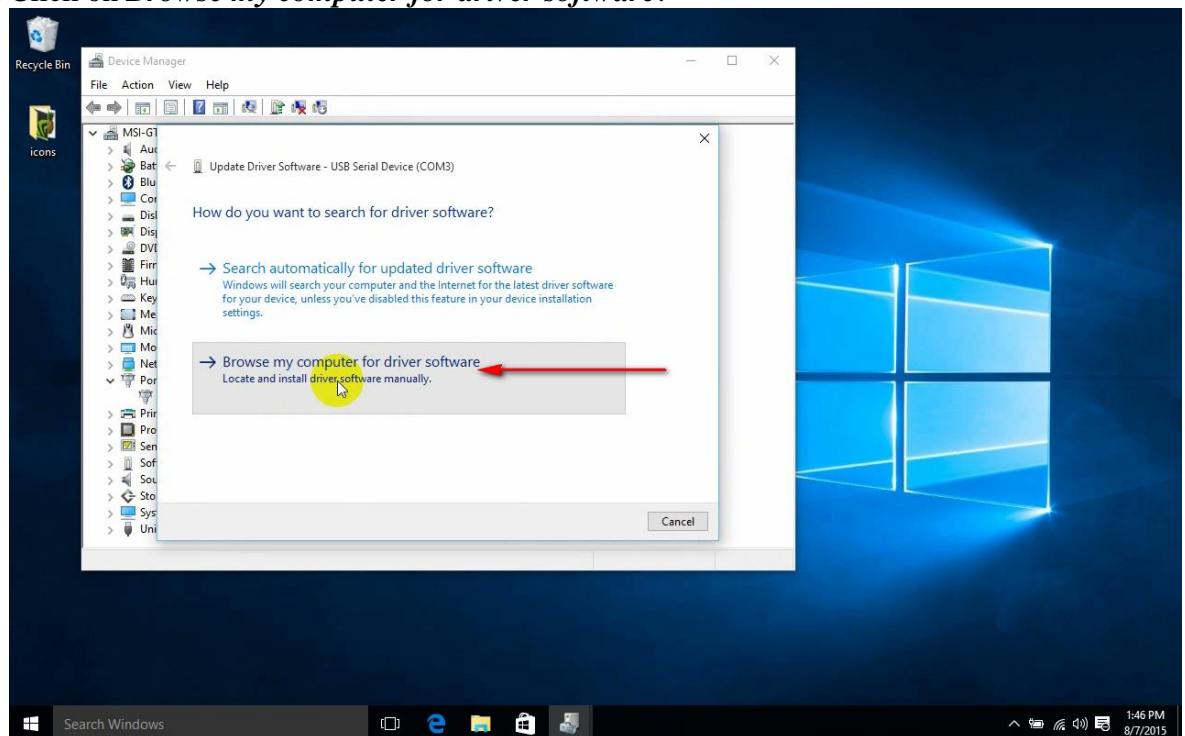
15. The **Device Manager** will open. Right Click on the **USB Serial Device** that shows up under Ports (COM & LPT)



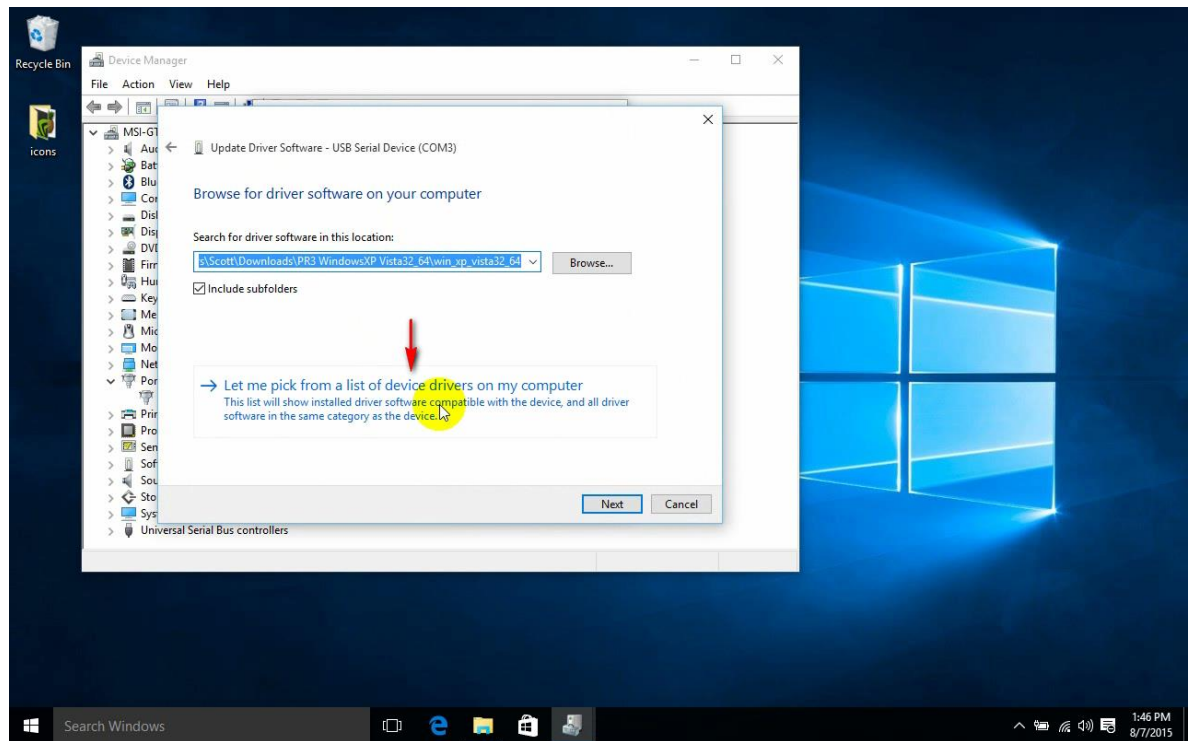
16. Click on **Update Driver Software...**



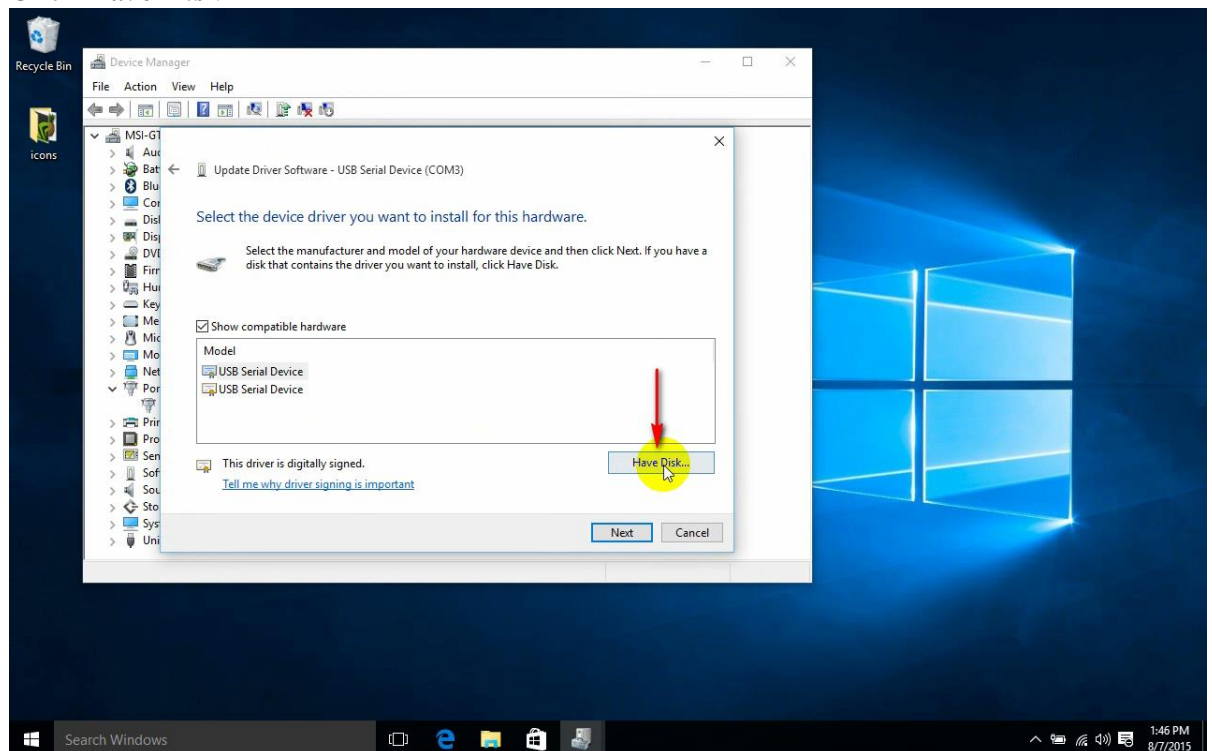
17. Click on ***Browse my computer for driver software.***



18. Click the ***Let me pick from a list of device drivers on my computer*** button



19. Click ***Have Disk***

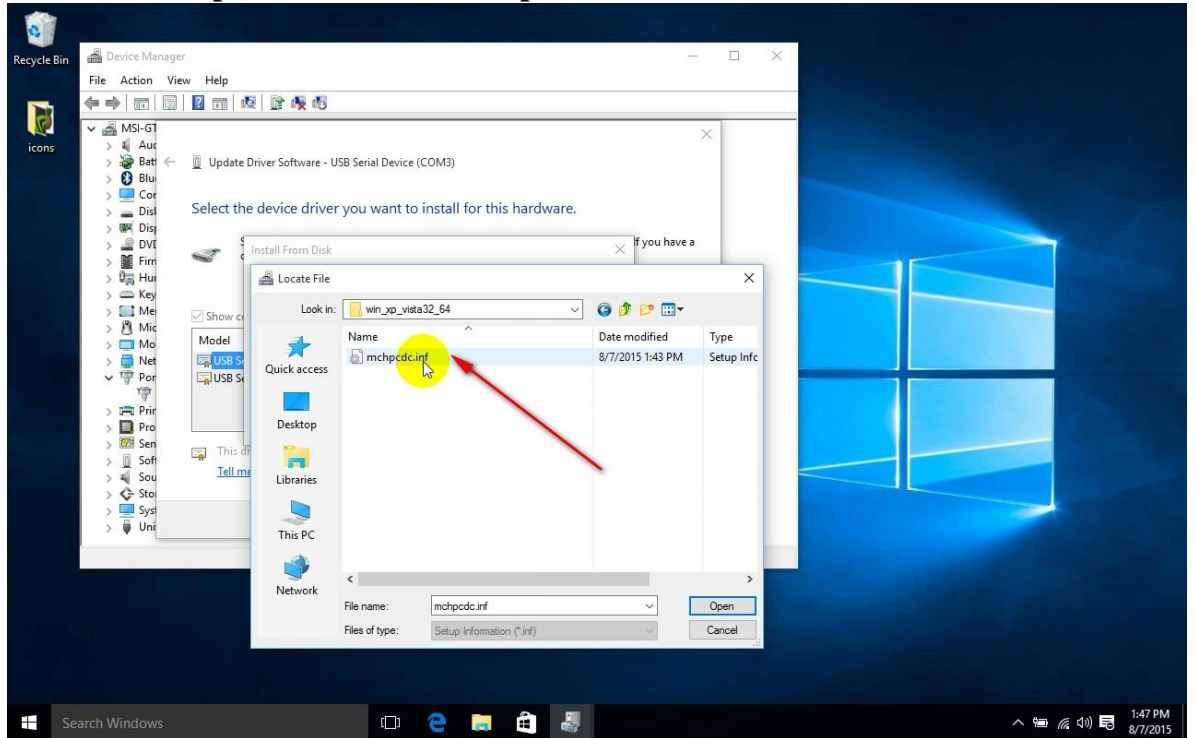


20. Click on ***Computer***.

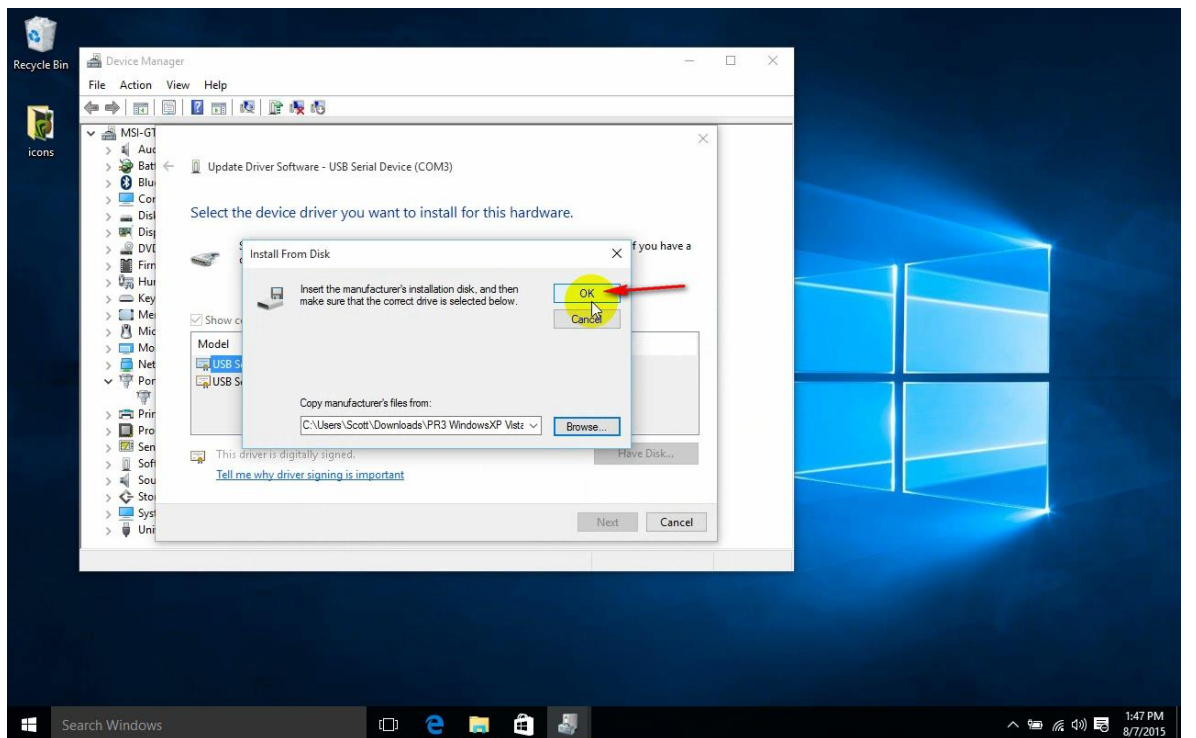
21. If using the Installation CD, click on the CD-Rom or DVD Drive. Typically (D:). OR, if you downloaded the drivers from the Digitrax website, browse to the location on your computer where you saved the drivers. Skip to Step 30.

22. If using the Installation CD, click on the subdirectory ***win_xp_vista32_64***.

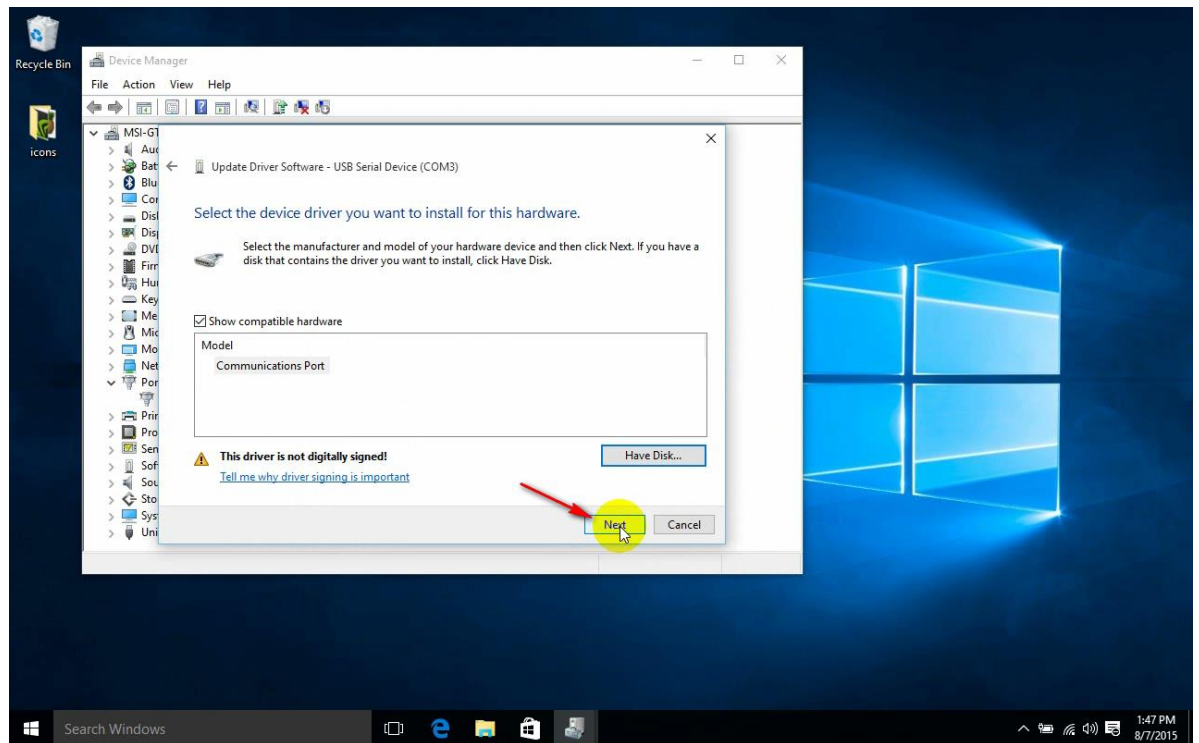
23. Select the “**mchpcdc.inf**” file. Click “**Open**”.



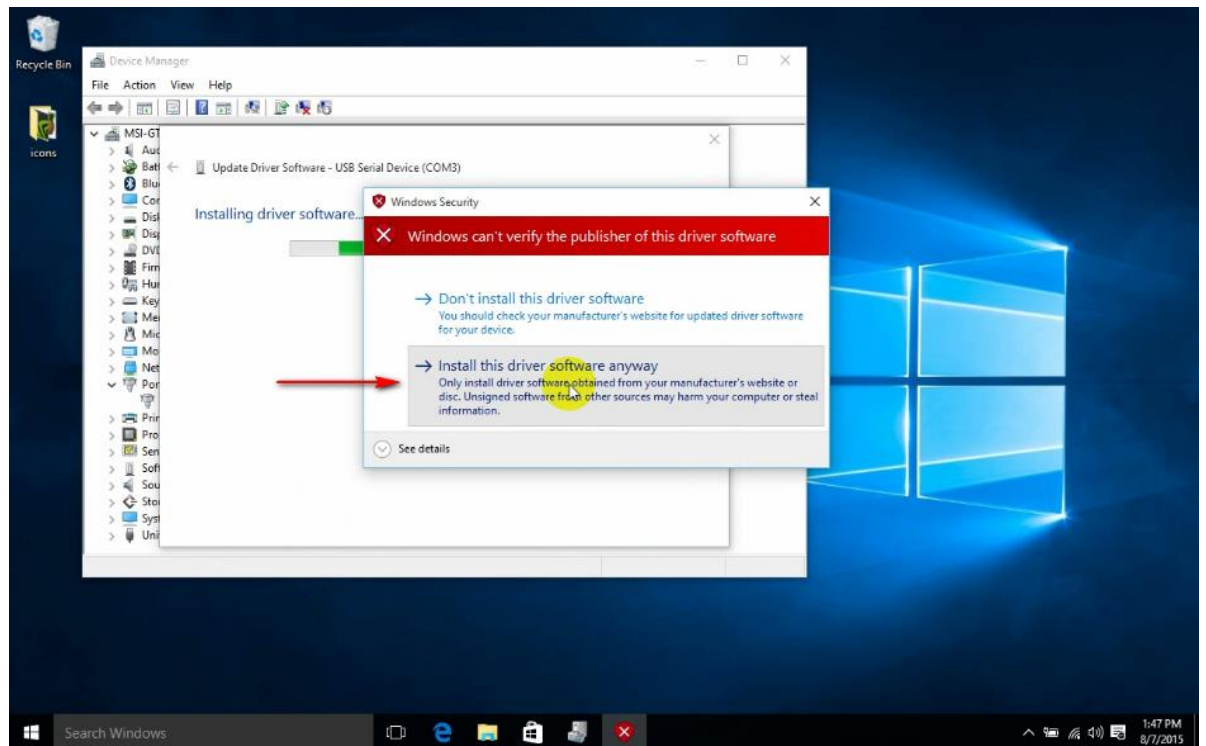
24. Click the **OK** button.



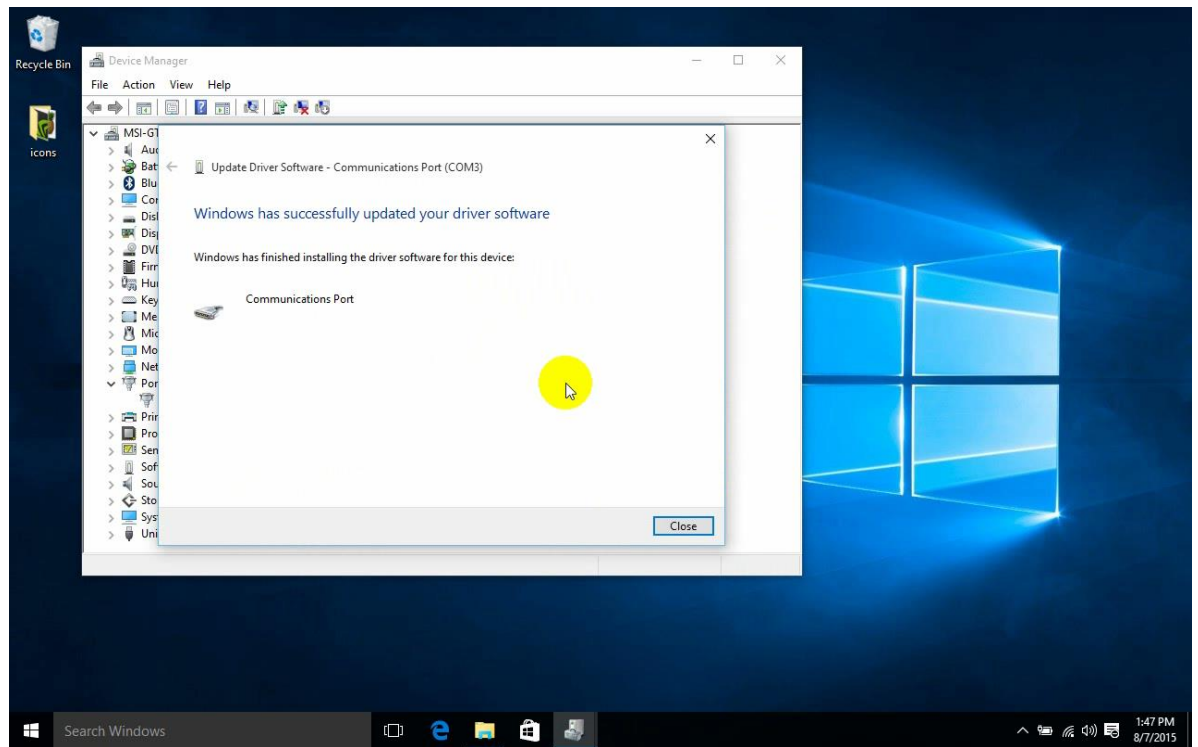
25. Click the **Next** button.



26. A Windows can't verify the publisher of this driver software dialog box will pop up. Click on "Install this software anyway"



27. A Windows has successfully updated your driver software box will pop up.



28. Note the COM Port that windows assigned the PR3. You will need this COM Port information for various Digitrax Utilities or 3rd party software programs. If you plug your PR3 into the same physical USB Port each and every time, Windows will always assign the same COM Port to your PR3.
29. Device Manager will show your newly installed COM port under Ports (Com & LPT).

Click the *Close* Button

Reboot your computer – this is important to complete the install process!

You have successfully installed your PR3 Driver Software