

Digitrax Device Firmware Update Instructions

The following instructions are provided for upgrading any Digitrax upgradeable device to the latest Firmware Revision.

These instructions assume that a Digitrax PR3 has been properly installed, is connected to a Command Station (DCS100 & 200, DB150, DCS50 or DCS51) and working properly. It is also assumed that the DigiIPL109 Utility and any required *.DMF files have been downloaded from <http://www.digitrax.com> prior to this Firmware update.

These instructions must be followed step by step to ensure the device is updated correctly.

Multiple devices can be upgraded at the same time. A splitter can be used to provide additional LocoNet jacks.

When updating any device with the DigiIPL109 Utility, nothing should be plugged in or unplugged from Loco Net while the update is running.

The following steps need to be taken before the Firmware Update can be started:

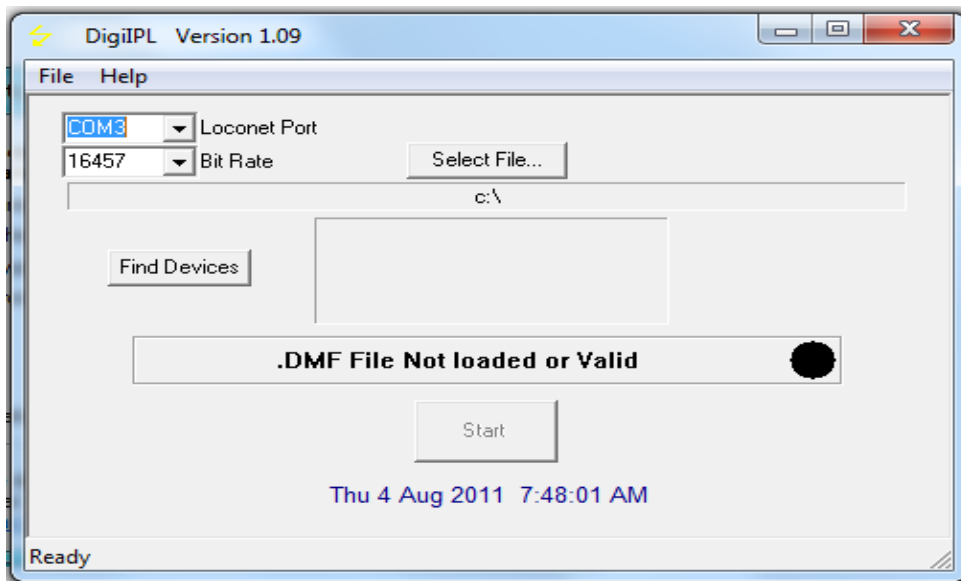
1. Disconnect **ALL** LocoNet devices from the Command Station with the exception of the PR3. No other LocoNet devices should be plugged in at this time. A quiet LocoNet is essential for successful completion of the update
2. If updating a device that requires an external power supply, ensure that the power supply is plugged in and powering the device.
3. If updating a DT402 Series Throttle, insert a known **GOOD** 9-volt battery into the Throttle, which is to be updated.
4. Plug the device into LocoNet.

To begin the Firmware Update, double click on the DigiIPL109.exe icon.

If the following Open File – Security Warning box is displayed, click ‘Run’

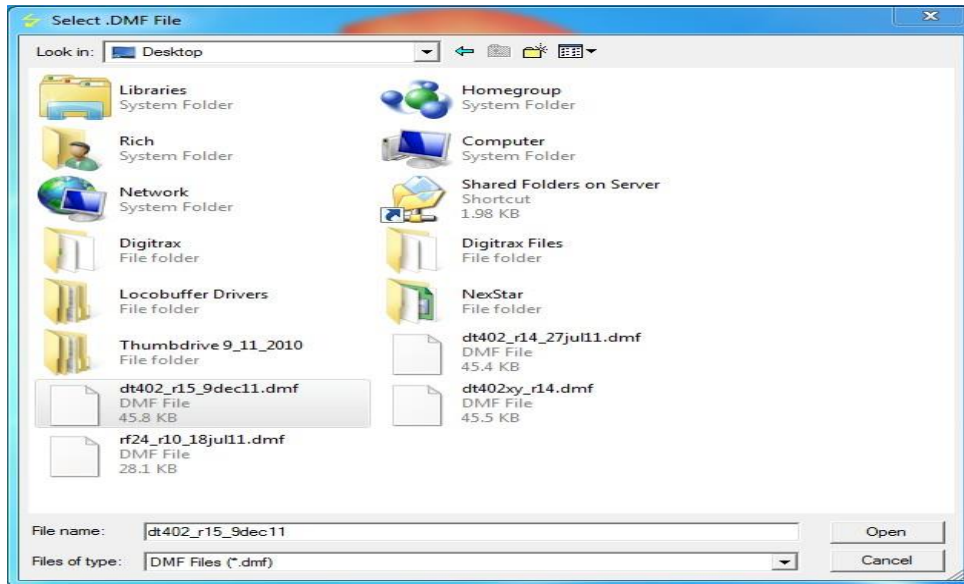


The DigiIPL109 Utility should open and look similar to this:

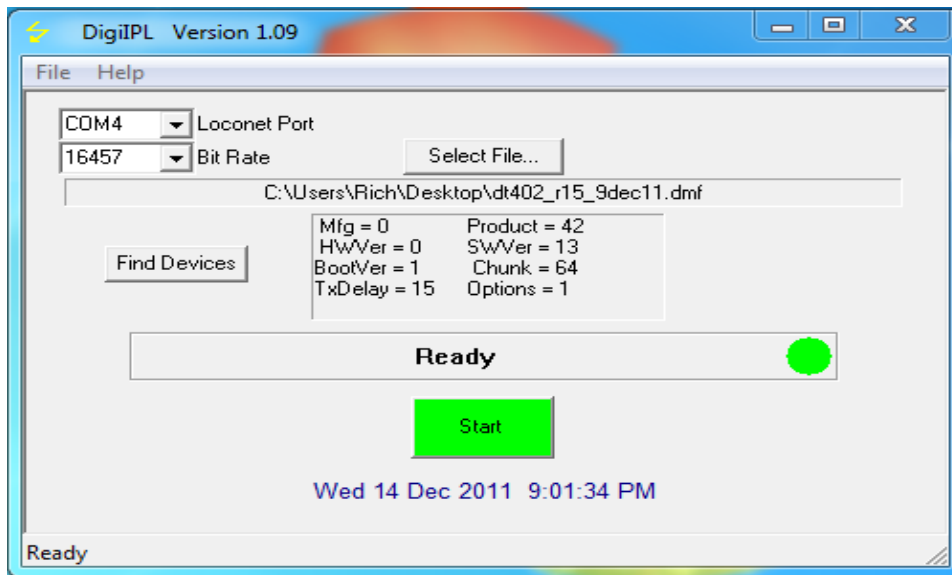


Verify that the proper LocoNet Port is selected. This is the Com Port that the computer has assigned to the PR3. The Bit Rate should be set for 16457.

Click on the 'Select File...' box, navigate to the location where you saved the *DMF file* for the device being updated, click on the filename to highlight it then click 'Open'.

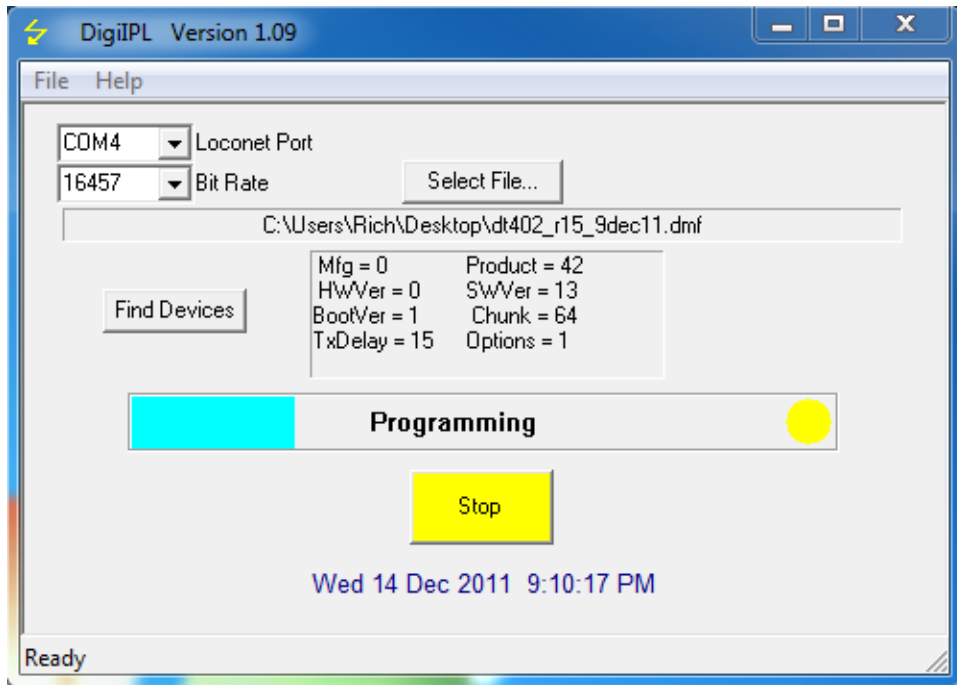


The program will go back to the main screen and look similar to this:



Click on the 'Start' button

A progress bar will be displayed and will look similar to this:



While the device is being updated, various LEDs will blink. If updating a Throttle, the white Flashlight LED will blink and the Throttle Display will display 'IPL Run'

When the update completes, unplug the device from LocoNet.

Remove power from the device and then reapply power. If updating a Throttle, remove the battery from the Throttle and then reinsert the battery.

Plug the device back into LocoNet.

Reconnect all the LocoNet devices that were previously disconnected. Close out any DigiIPL109 display boxes that are still opened. Return the layout to normal operation.

Please contact the Helpdesk (helpdesk.digitrax.com) with any questions.

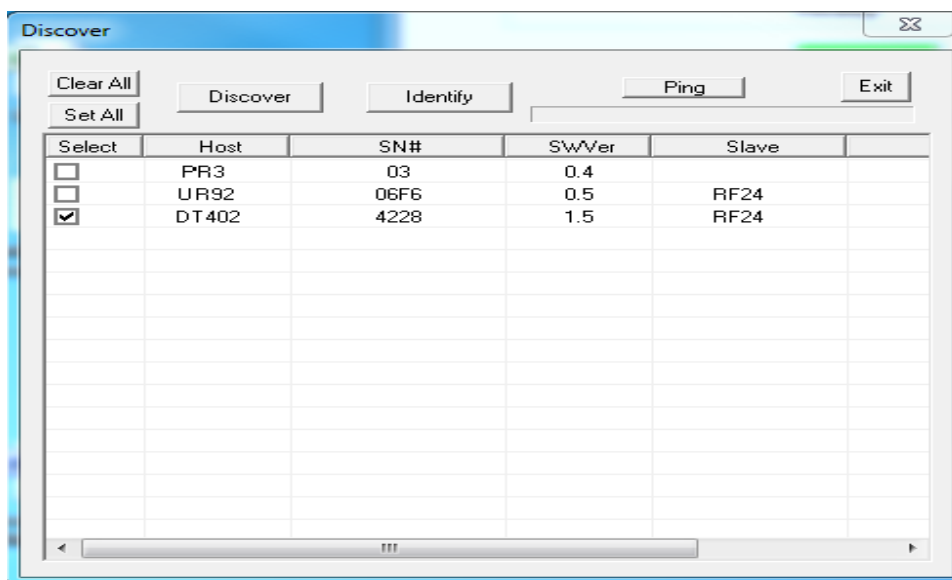
Tech Support is not configured to diagnose issues related to computer, operating system, hardware, configuration or other possible problem areas that may cause problems with running the DigiIPL109 utility.

Additional Information

The DigiIPL109 utility can be used to display the version of firmware that is in a particular device.

To see the firmware version, click the 'Find Devices' box. A list of devices will appear in the Discover box.

The display will look similar to this:



In this example, the PR3 has version 4, UR92 has version 5 and the DT402 has version 1.5 loaded.

NOTE:

The following devices will show up under the 'Find Devices' box:

DT402 series Throttles
RF24 (part of the DT402D and UR92)
UR92
PR3

The following do NOT appear:

LNRP
DCS51
WTL25 (Walther's DCC Command Station)

Please contact the Helpdesk (helpdesk.digitrax.com) with any questions.

Tech Support is not configured to diagnose issues related to computer, operating system, hardware, configuration or other possible problem areas that may cause problems with running the DigiIPL109 utility.